

*Take your business
out to the ballgame*



Double Angel Ballpark

OUTFIELD SIGN PROGRAM 2009

20,000+ people will see your message each year



3 year contract costs between \$1-\$2 per day



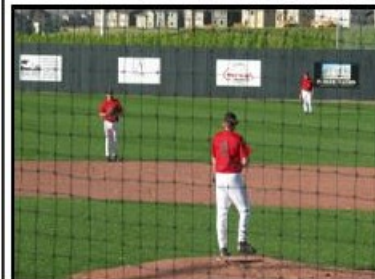
Support youth and a Parker non-profit organization



Double Angel Ballpark OUTFIELD SIGN PROGRAM

- ◆ 3 year contract with 3 year guarantee for sign quality (with option to renew)
- ◆ 4'x8' full color signs available for both Dillon and Logan Fields
- ◆ Sign sponsors will be featured—with a coupon—on a Double Angel Sponsor Map, available at the ballpark for visitors looking for activities or services in the area
- ◆ An estimated 25,000 players, families and spectators from Parker, metro Denver, and from the surrounding western states play at Double Angel each year. 34 days of tournaments are scheduled in 2009 and more than 800 activities took place at the facility in 2008.
- ◆ Outfield sign program offers an incredible marketing value for the money compared to other advertising venues.
- ◆ Terms are available

Dillon Field Signs



- ◆ 4'x8' aluminum full color sign on wooden outfield fence
- ◆ Cost for new sponsor: \$1650
- ◆ Renewals \$1320 or \$1500

Logan Field Signs

- ◆ New for 2009
- ◆ 4'x8' mesh full color sign on chain-link outfield fence
- ◆ Cost \$1200



**Don't miss this great marketing opportunity
& support a local non-profit at the same time**

Double Angel Foundation

PO Box 4004, Parker, CO 80134

PH: 303-841-2420 FAX: 303-841-5557

doubleangelorg@msn.com

www.doubleangel.org